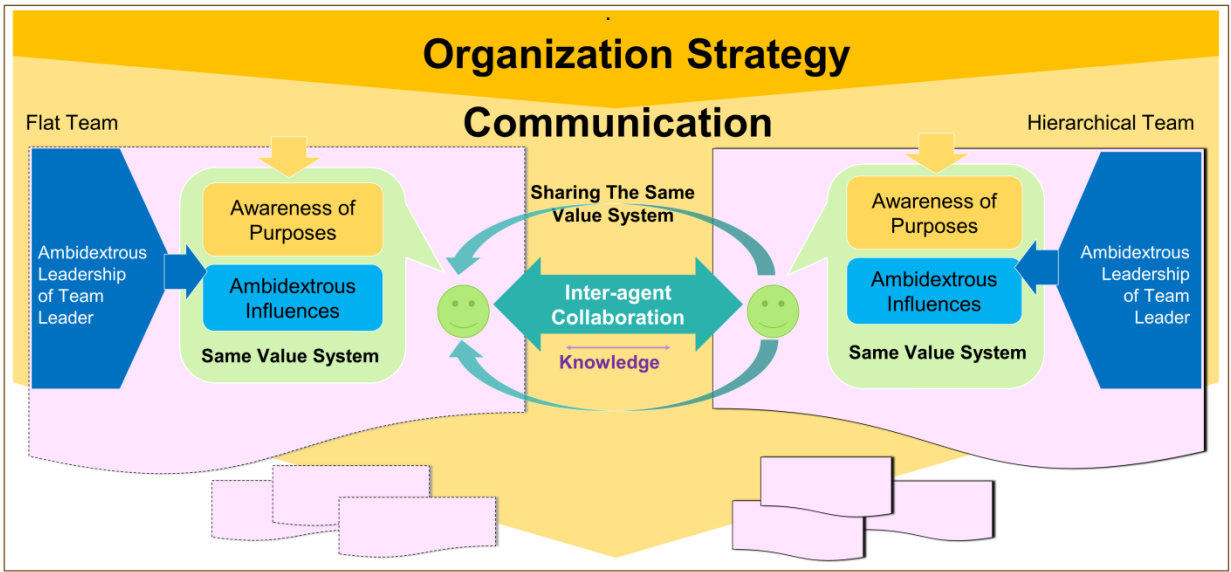


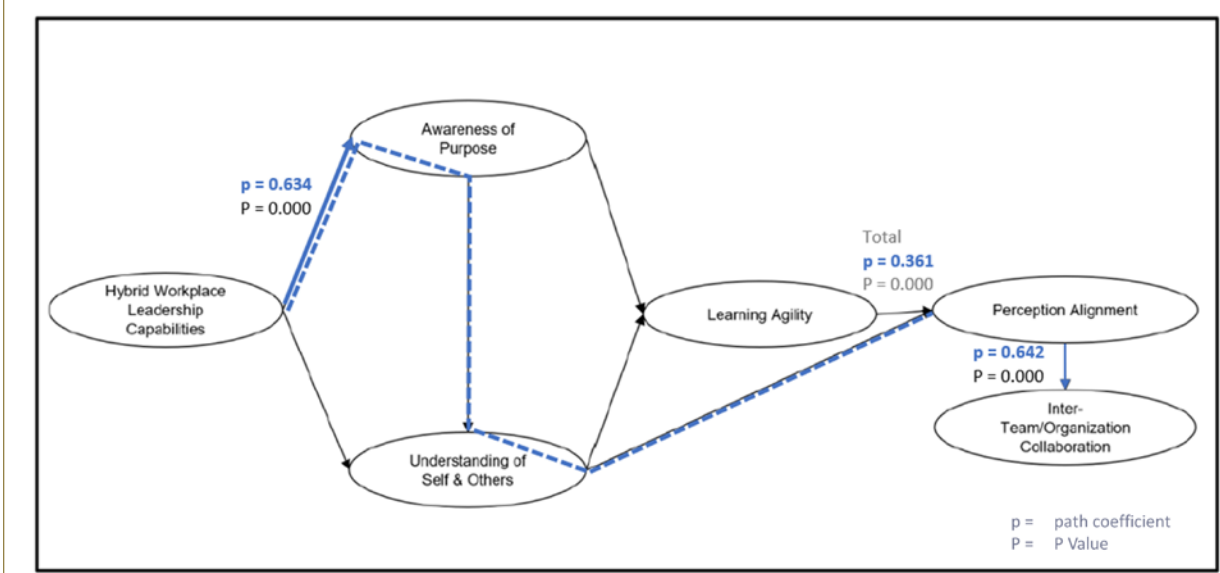
APPENDICES

Figure A1. Interaction between Elements to Enhancing Inter-agent Collaboration



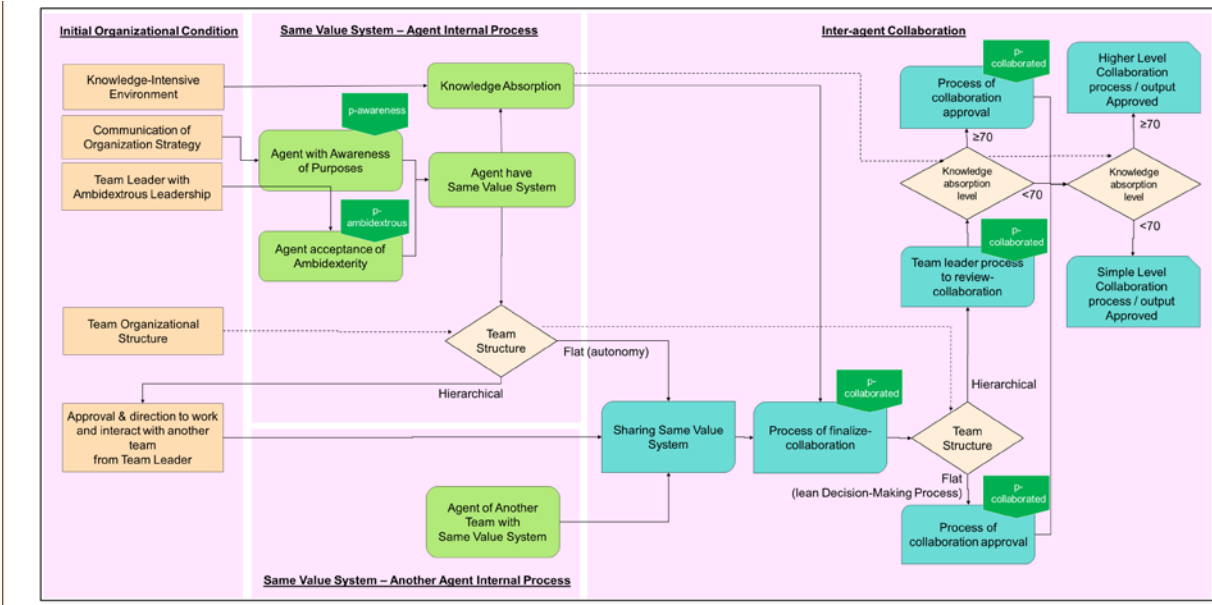
Source: authors.

Figure A2. Path Coefficients in Total Effect for Parameter Assumption



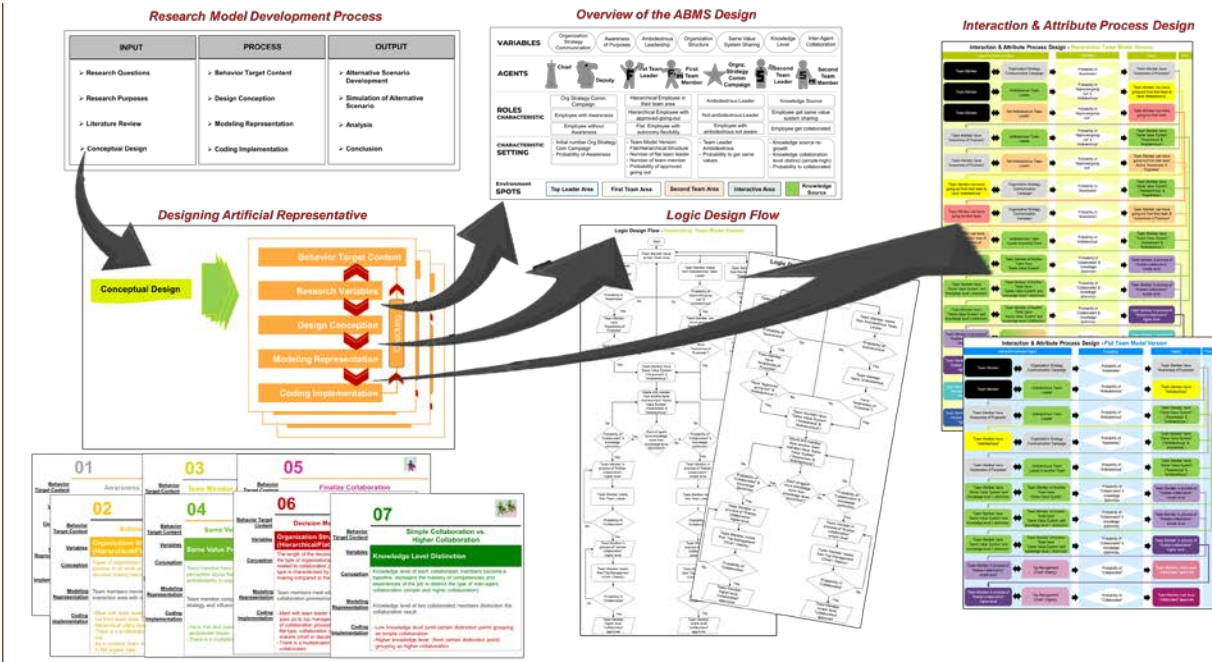
Source: authors.

Figure A3. Conceptual Design



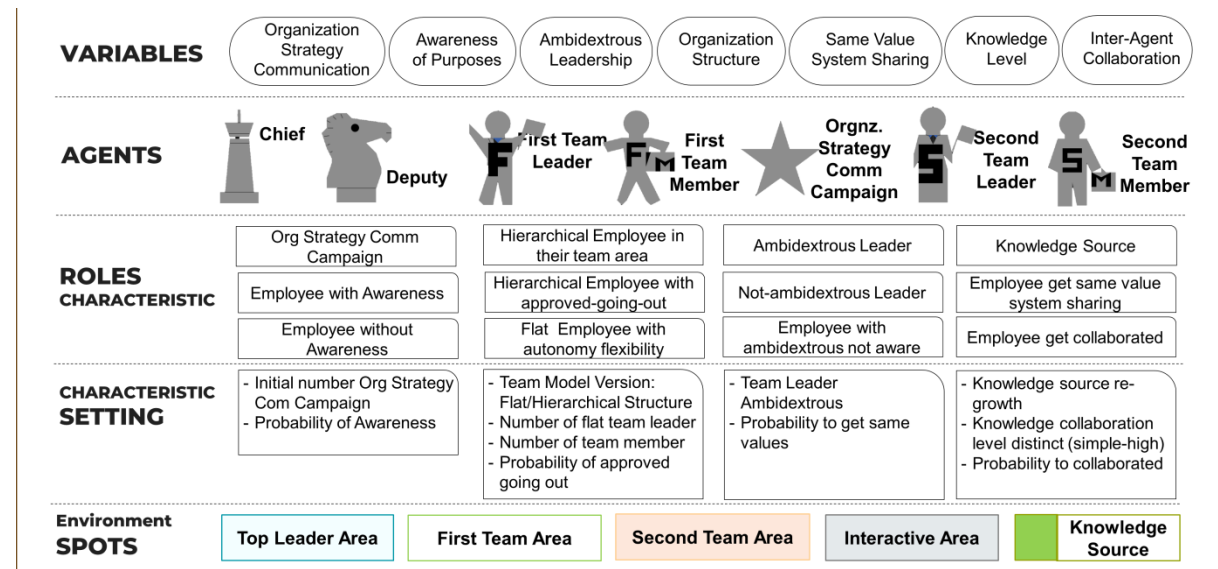
Source: authors.

Figure A4. Designing Artificial Representative Models on Agent-Based Collaboration



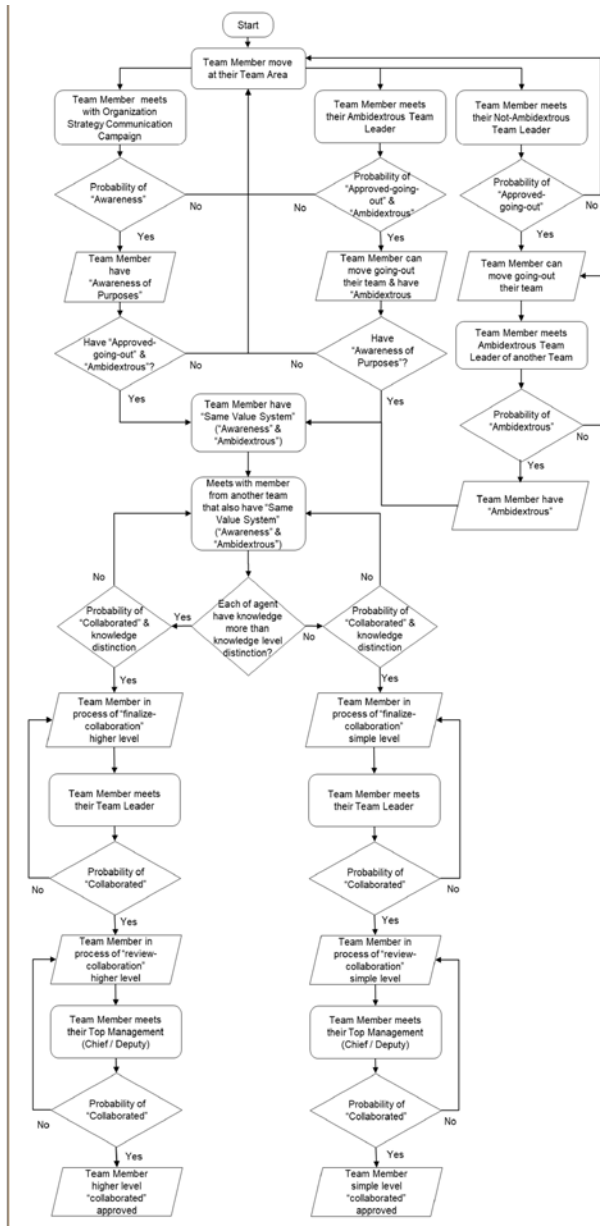
Source: authors.

Figure A5. Overview of the ABMS Design



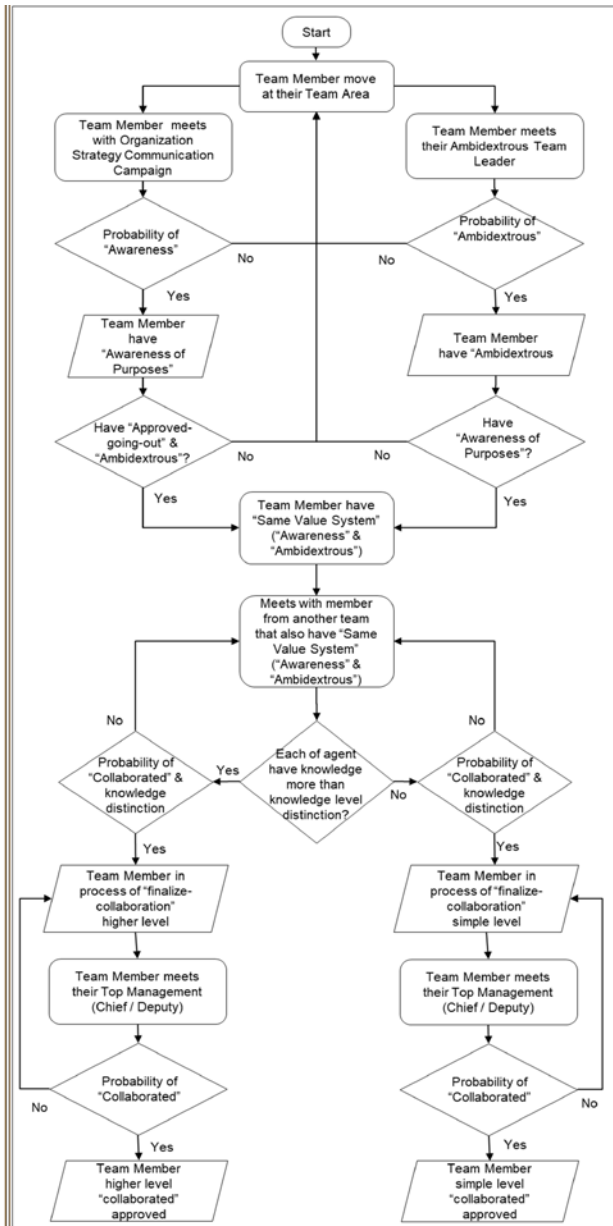
Source: authors.

Figure A6. Logic Design Flow of Hierarchical Team Model Version



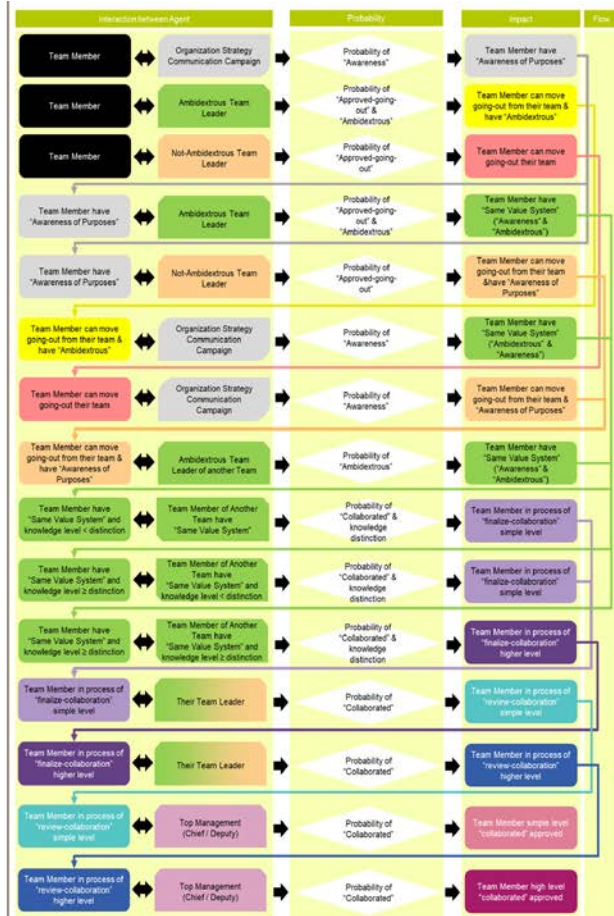
Source: authors.

Figure A7. Logic Design Flow of Flat Team Model Version



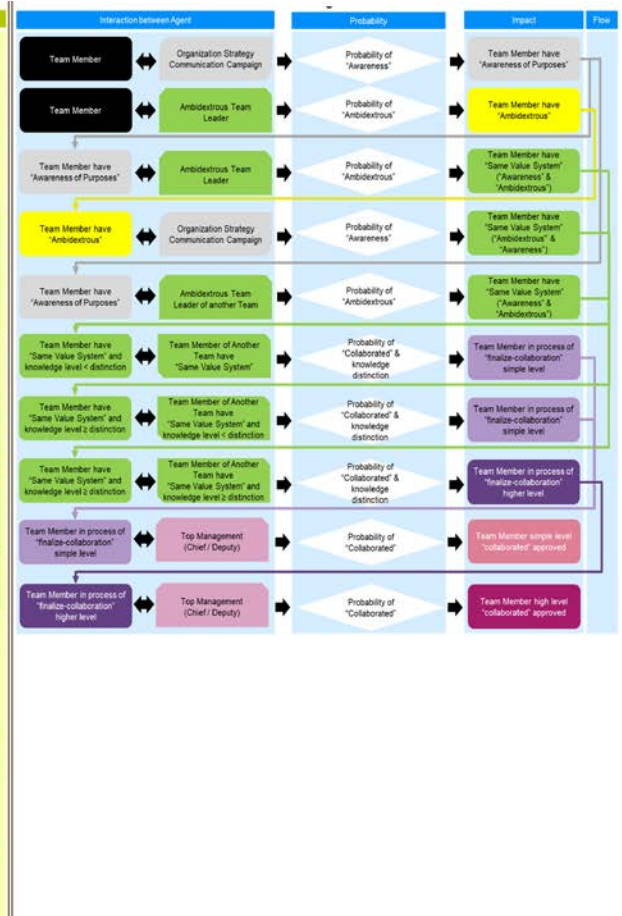
Source: authors.

Figure A8. Interaction Detail for Hierarchical Team Model



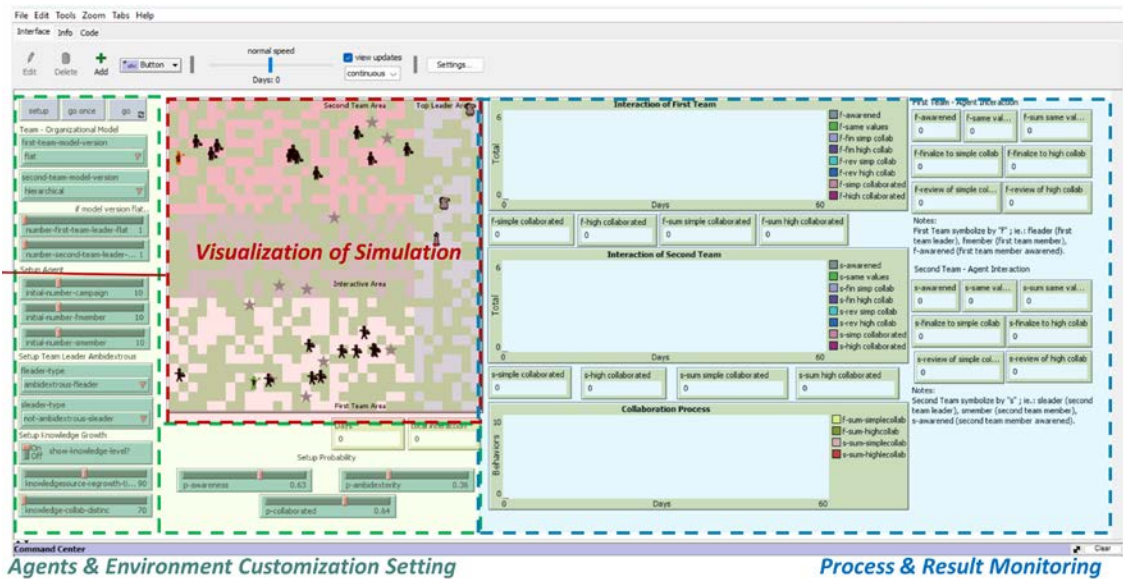
Source: authors.

Figure A9. Interaction Detail for Flat Team Model



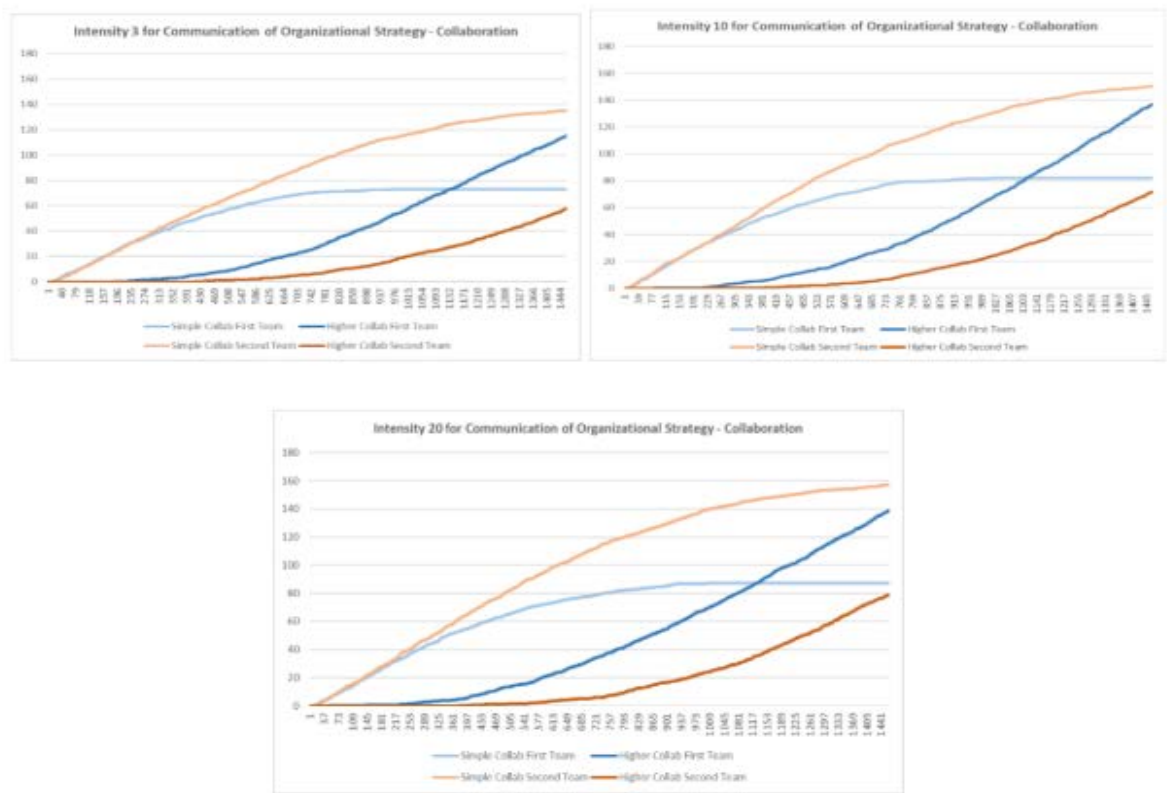
Source: authors.

Figure A10. The Visualization of ABMS Model



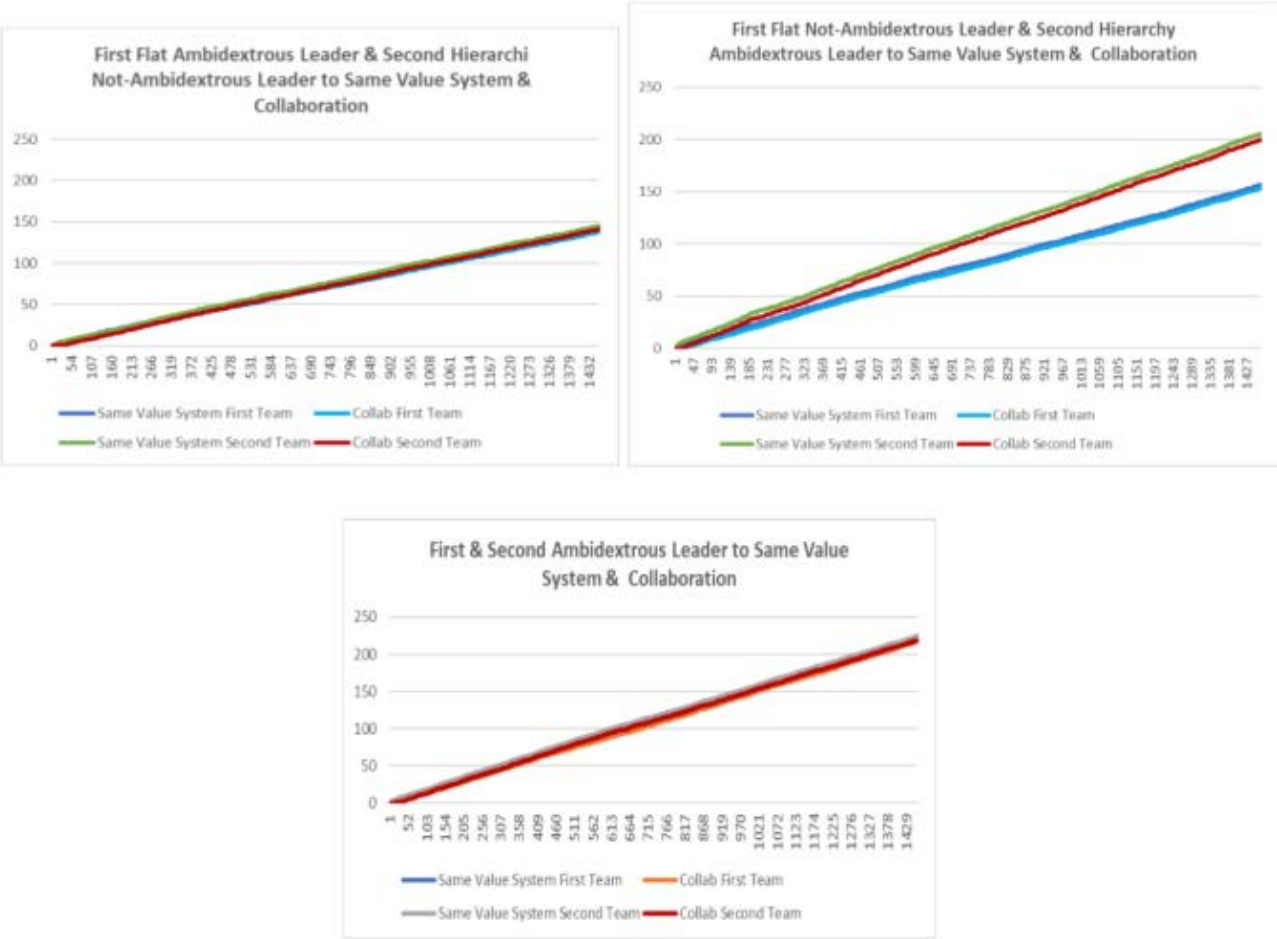
Source: authors.

Figure A11. The Dynamics of Inter-Agent Collaboration Affected by Various Intensity of Communication of Organization Strategy



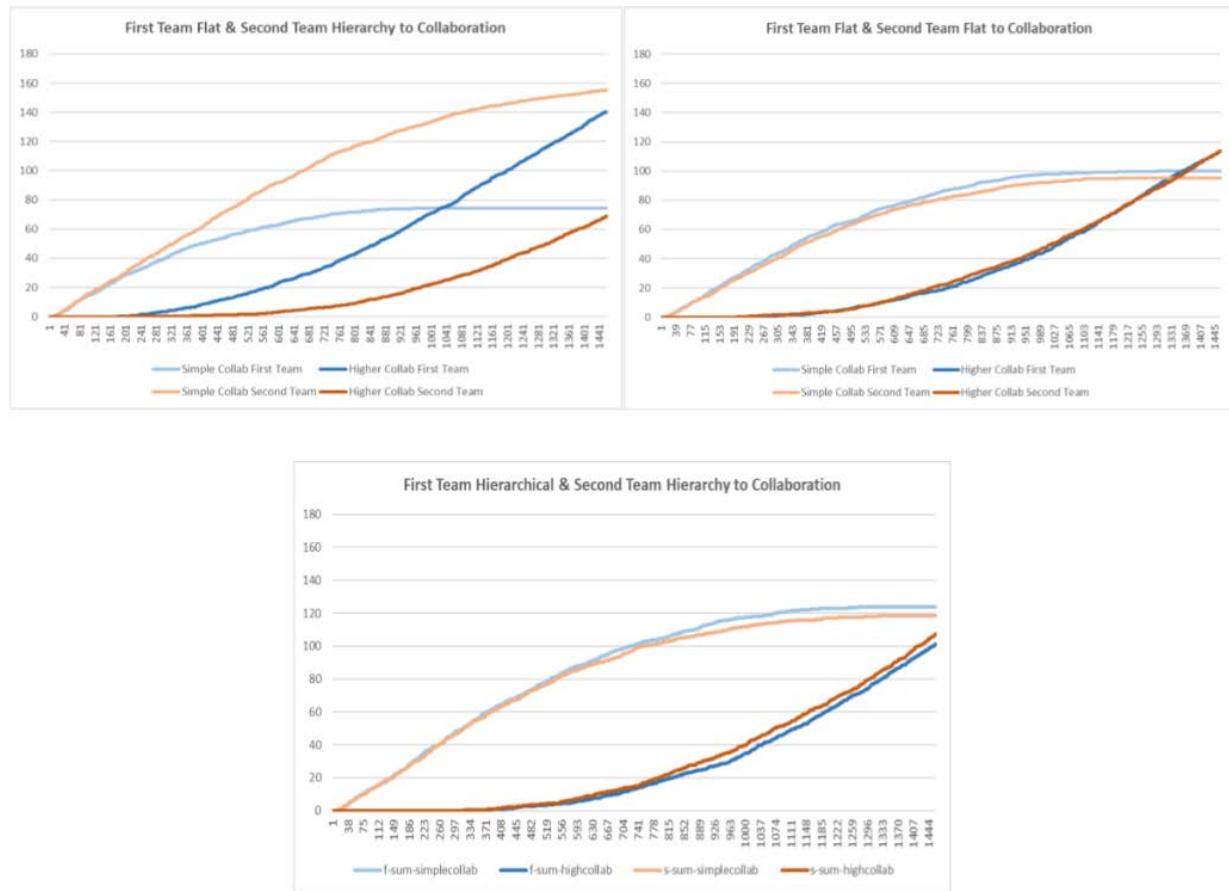
Source: authors.

Figure A12. Impact of Ambidextrous Leadership to same value system and inter-agent collaboration



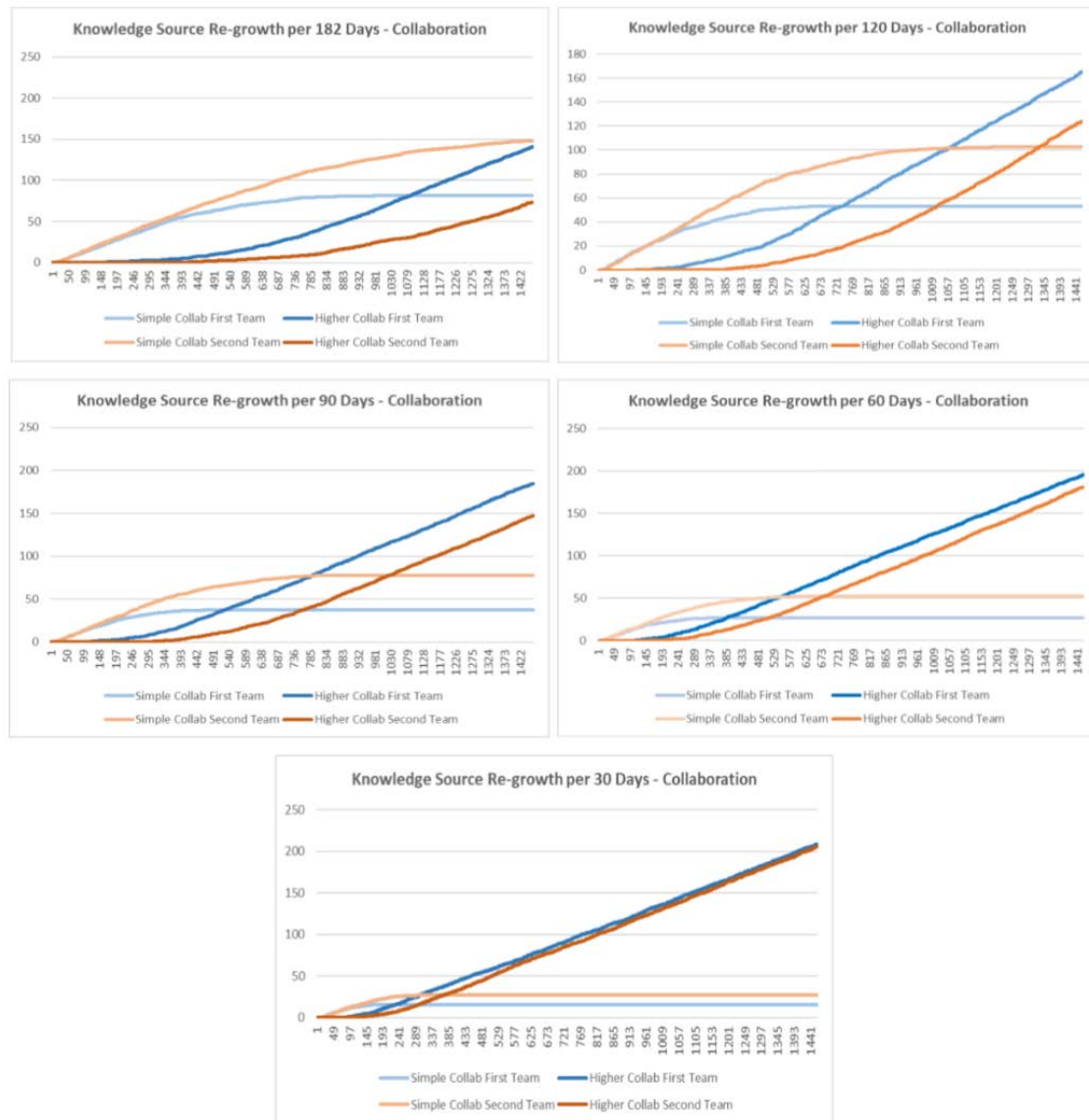
Source: authors.

Figure A13. Knowledge re-growth of knowledge-intensive environment and inter-agent collaboration



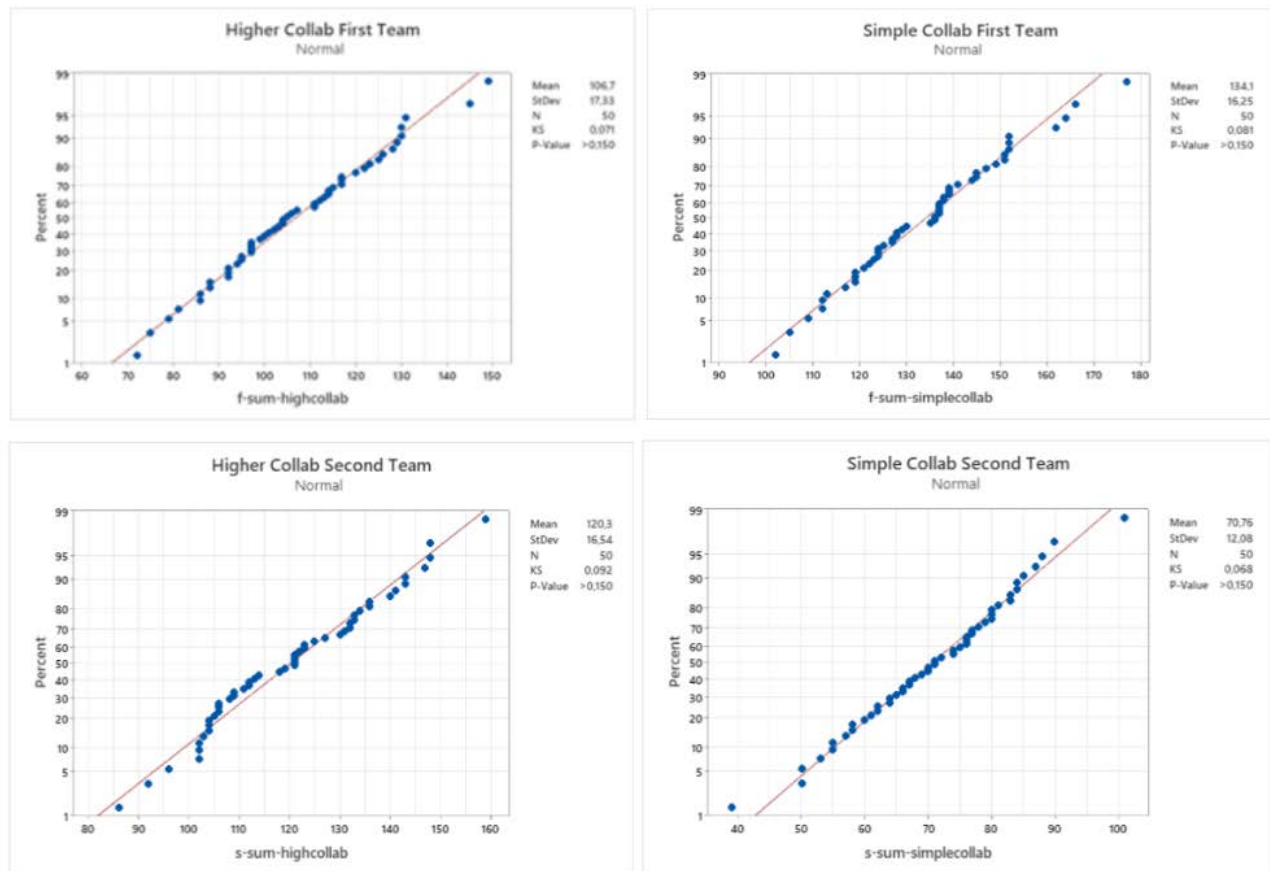
Source: authors.

Figure A14. The Dynamics of Inter-Agent Collaboration Affected by Knowledge Re-Growth of Knowledge-Intensive Environment



Source: authors.

Figure A15. Normality Test of Scenario Replication



Source: authors.